

Content

- ☐ Pump x 1
- ☐ Suction Pipe x 1
- ☐ Kamlok Coupler x 1
- ☐ PVC Layflat hose (20 m) x 1
- ☐ Float x 1
- ☐ Controller x 1
- ☐ Bluetooth RC (LC135H-M3-D) x 1
- ☐ Cable (10 m) x 1



Specifications

Hose diameter (mm)	100mm	
Output (kw)	5.5kw	
No. of poles	8	
Voltage (v)	200v	
Insulation class	F	
Cable length (m)	25m	
Total head (m)	With 10 m head	With 15 m head
Capacity	1.2 m³/min	0.8 m³/min
Weight (kg)	28kg	

* Special specifications: 1) voltage 380 V-460V
2) Cable extension 40 m

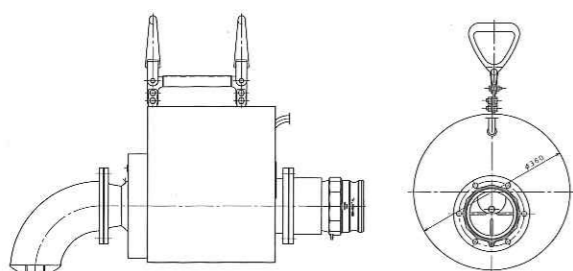
Liquid handled	Liquid type	River water, firefighting water, underground flood water, rain water
	Temperature	0 to 40°C
Structure	Impeller	Mixed flow
	Shaft seal type	Double mechanical seal
	Bearing	Ball bearing
Material	Impeller	SCS13
	Shaft	Titanium
	Casing	Aluminum alloy
	Shaft seal type	Silicon carbide (welded section)

Pump

Dimensions

Hose diameter 100mm
W (φ) 360mm
L 818mm

Weight
28kg

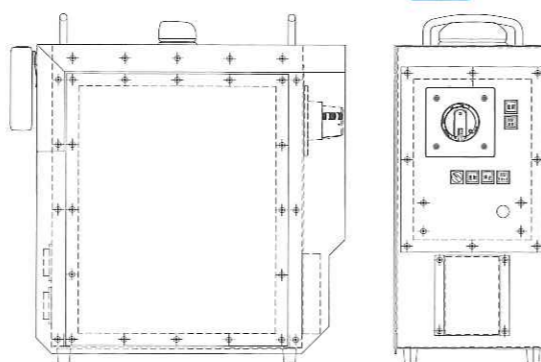


Controller

Dimensions

H 550mm
W (φ) 254mm
L 500mm

Weight
38kg



Safety Precautions

- To use the pump safely and properly, store the instruction manual and cautionary statement in a secure place.
- Ensure that all electrical wiring is connected properly and safely in accordance with electrical equipment technical standards and interior wiring regulations. Incorrectly connected electrical wiring may cause electrocution or fires.
- Select a product that suits your intended application. Using products inappropriately may cause an accident.
- Never use the product or install parts while it is raised, as doing so is dangerous.

* Please note that parts of this catalog are subject to change following product improvements. * Unauthorized reprinting of this catalog is prohibited.

* This products listed in this catalog are classified as "Goods Listed in Item 16 of Appended Table 1 of the Export Trade Control Order," and when exporting such goods, confirmation of the "intended use," "end user" and other properties is required, and in some cases, permission from the Minister of Economy, Trade and Industry may be required. (these requirements to be confirmed by the exporting company)

Distributor

Manufacturer Ebarashoji Co., Ltd.

9-10, Nihonbashikayabacho 3-Chome, Chuo-ku, Tokyo
103-0025 Japan
TEL. +81-3-5645-0151 FAX. +81-3-5645-0158
Co-engineering EIM Electric Co., Ltd.

Very Light

Floating Pump



Ebasho

Ebarashoji Co., Ltd.

Ebasho



Patent pending

VeryLight Floating Pump

Use for

The feature

Light weight

Urgent flood control, water intake ,
and more..

floating on water surface.

Mobile capable weight by manpower.
Suction hose free. Quick and Easy setting

Hight Water level.

Low Water level.



Floating Pump



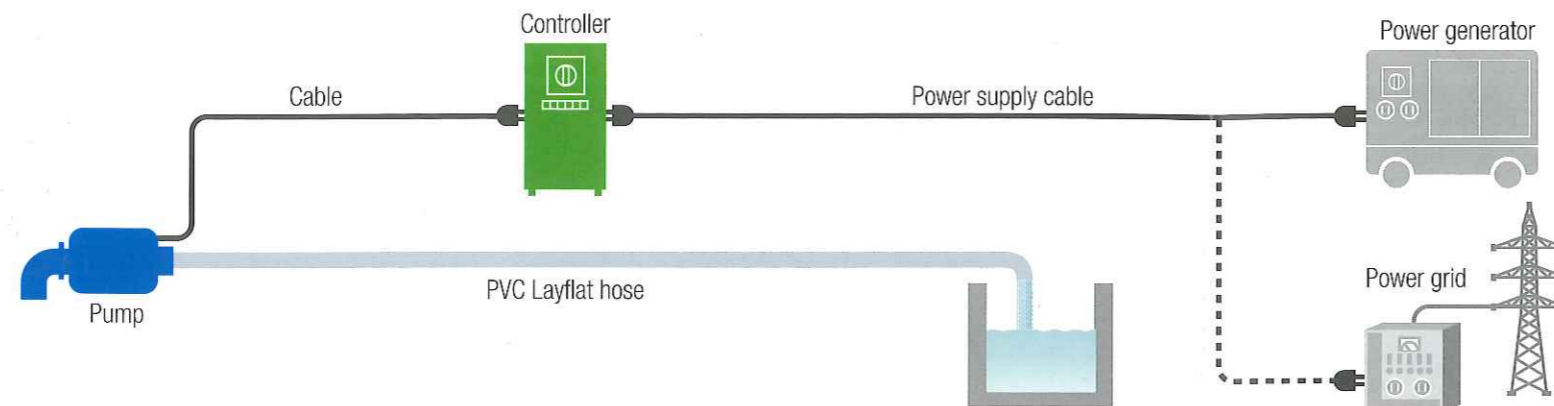
Underpass
(excavated roads)
Flooding



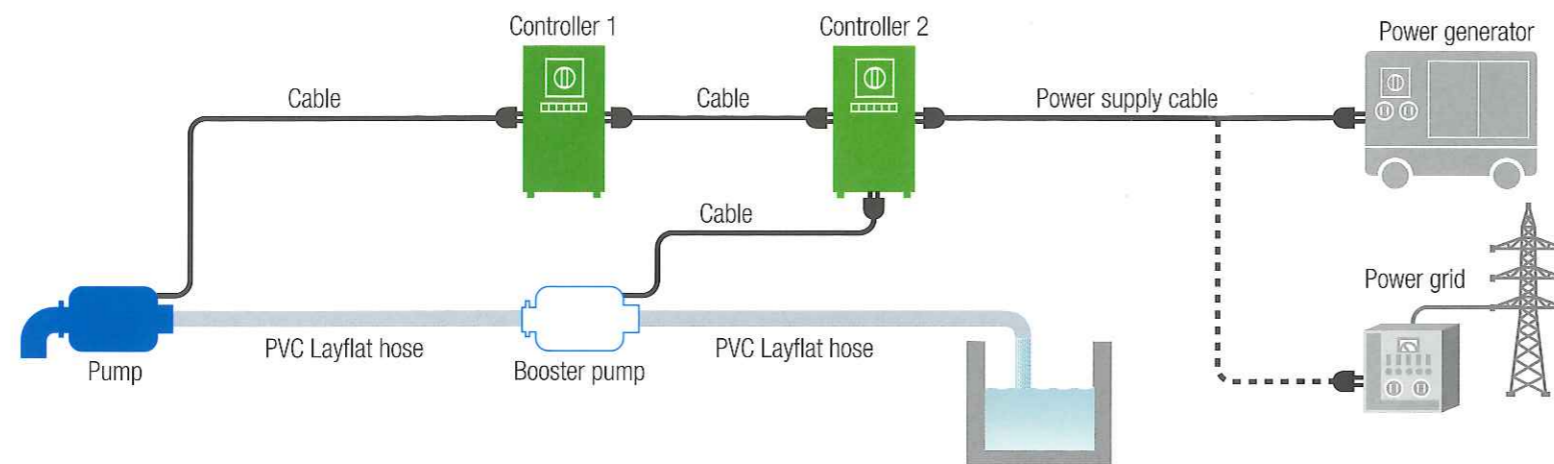
Underground Flooding



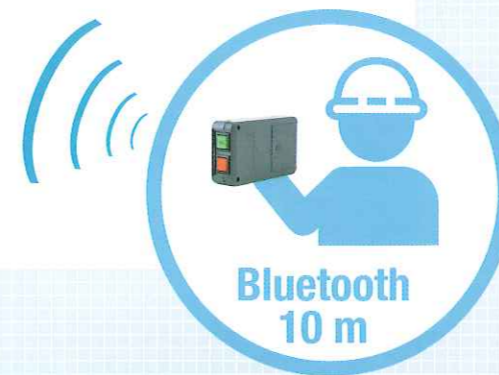
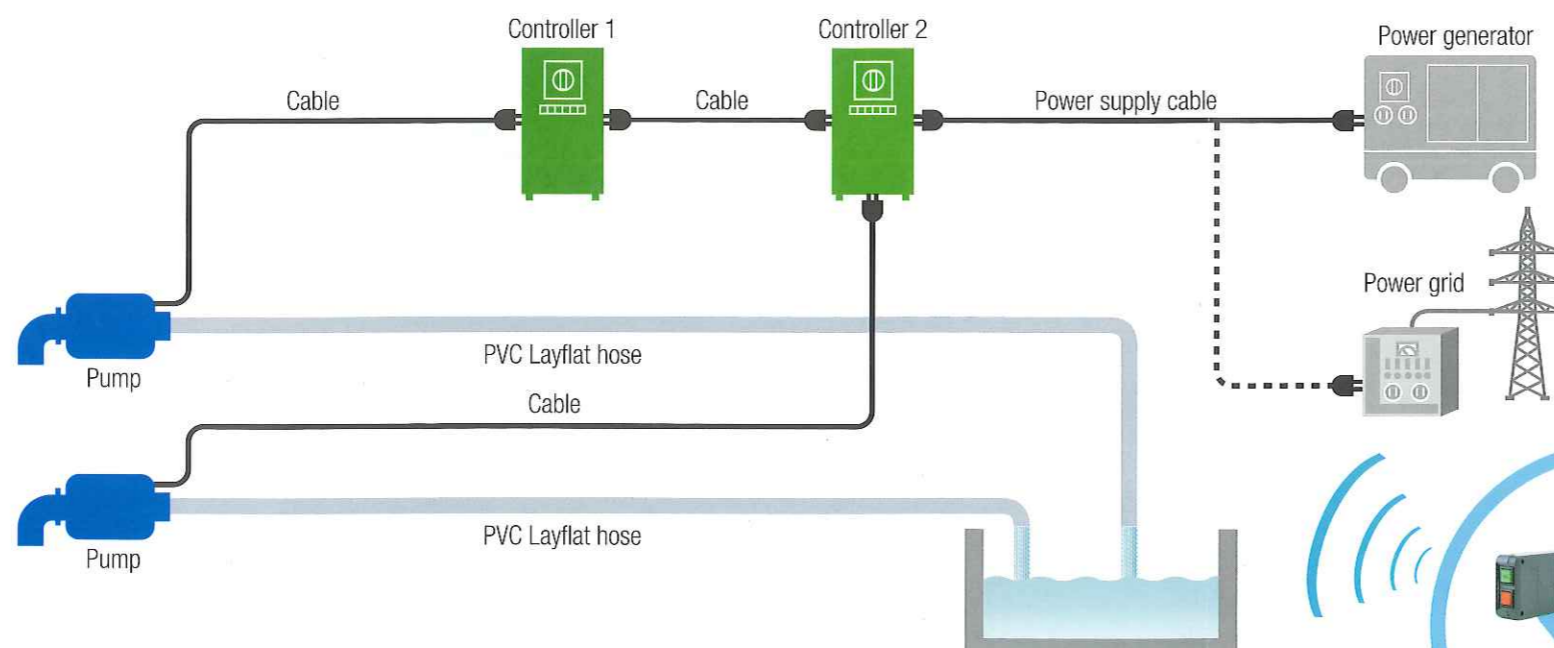
Standard



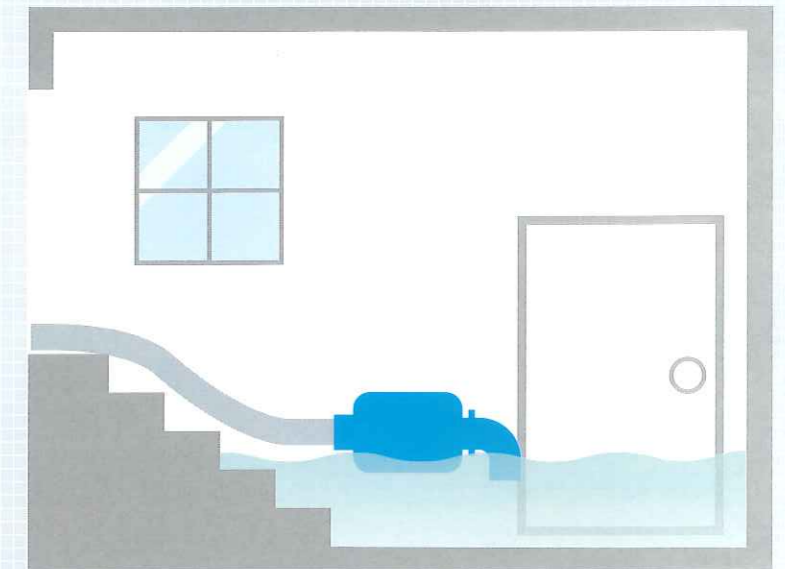
Two pump operation(Boosting)



Two pump operation(Double capacity)



Flooded building basement



Flooded underpass



Agricultural

